

TECHNICAL SPECIFICATIONS

Country of Origin:	Australia
Colours:	10 Standard
Yarn:	100% Soft Solution Dyed Nylon
Surface Texture:	Level Loop Pile
Gauge:	15.7/10cm (1/4th Gauge)
Thickness:	6.50mm
Pile Weight:	1017g/m ²
Backing:	Synthetic
Installation Method:	Conventionally Laid
Type:	Broadloom Carpet
Roll Size:	3.66
Secondary Backing:	Synthetic
Pattern Repeat:	Not Applicable

PERFORMANCE

Anti-Static:	(AATCC 134) <3.5KV at 21°C & 20% Relative Humidity
Light Reflectance:	Available on Request
Stain Resistance:	Stain Block®
ACCS Rating:	Residential Extra Heavy Duty & Stairs, Contract Medium Duty & Stairs (#17091)~
Australian Guarantee:	5 Year Contract Guarantee Available on Request*

SUSTAINABILITY

Accreditation:	Manufactured under a quality, environmental and health and safety system certified and complying with ISO 9001, ISO 14001 and AS 4801 by accredited certification bodies.
PVC Minimisation:	PVC Free



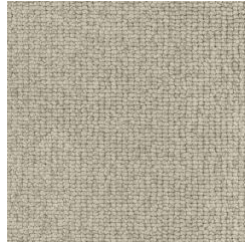
Specifications and colourations are subject to manufacturing tolerances. As part of the GH Commercial continuous improvement program, GH Commercial reserves the right to change the specifications of or delete colours of this product without notice. While all care is taken, product images may vary in colour due to possible printing process variations. Images do not seek to duplicate the exact visual appearance, but serve merely as a guide or point of reference.

All GH Commercial carpets must be installed in accordance with the latest AS2455 and any relevant GH Commercial Installation Instructions. ~Test results and certificates are available on request. *This guarantee is in addition to any rights consumers may have under Australian consumer laws. Terms and conditions apply - for full information in respect to the scope of the guarantee, please contact your GH Commercial Account Manager or our Head Office.

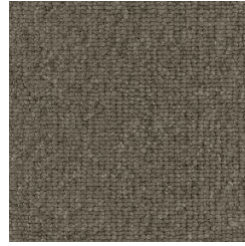
Rocky Point



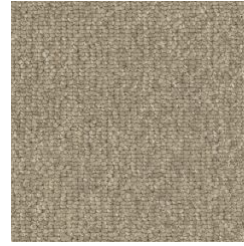
0730
GRANITE



0705
LIMESTONE



0180
ROCKFACE



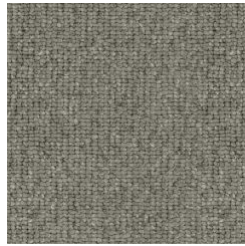
0540
FOSSIL



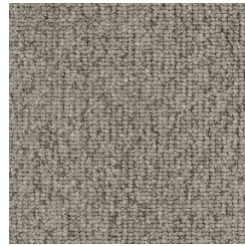
0520
SANDSTONE



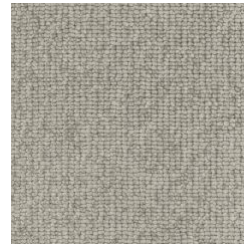
0790
GORGE



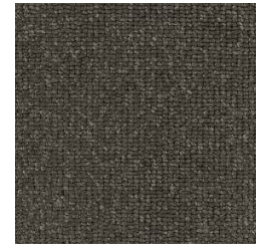
0750
PENINSULA



0715
MESA



0710
STONECROP



0770
ESCARPMENT