

Inspiring
Great
Spaces™



TIMBERLINE TRANSLATIONS

COMMERCIAL FLOORING
HETEROGENEOUS VINYL SHEET

TIMBERLINE

2.0mm x 1.83m x 25m



RUSTIC BEECH – COWABUNGA
4X373490



ACADIAN OAK – WELL VERSED
4X373740



OAK – BONA FIDE
4X373600



RUSTIC BEECH – LIFE IS A
4X373470



ACADIAN OAK – OILED PLANK
4X373720



OAK – LIKE A ROCK
4X373590



RUSTIC BEECH – HANG TEN
4X373480



MAHOGANY – CACAO
4X373700



OAK – TRIED & TRUE
4X373550

TIMBERLINE

2.0mm x 1.83m x 25m



OAK – LEVEL HEADED
4X373580



SURIT
4X051100



CALDE
4X031300



OAK – SOLID
4X373570



LUCI
4X031600



OBRA
4X062200



OAK – TOO RIGHT
4X041400



SOLU
4X061100



BLANC
4X032400

TRANSLATIONS

2.0mm x 1.83m x 25m



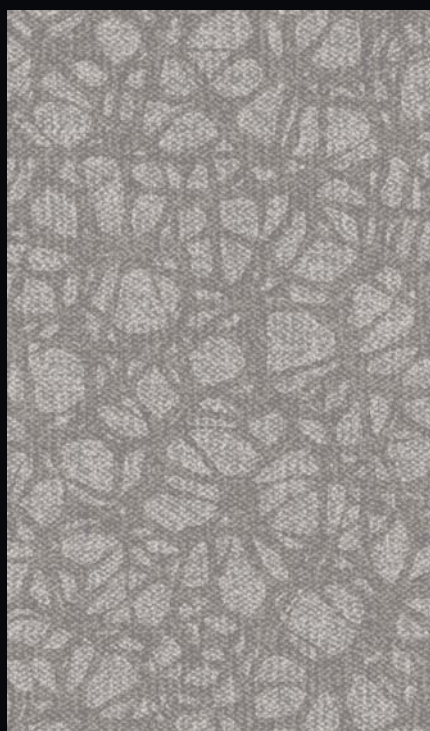
ORIGAMI – SPELLBOUND
4S380540



MAZE – MAKE BELIEVE
4S380570



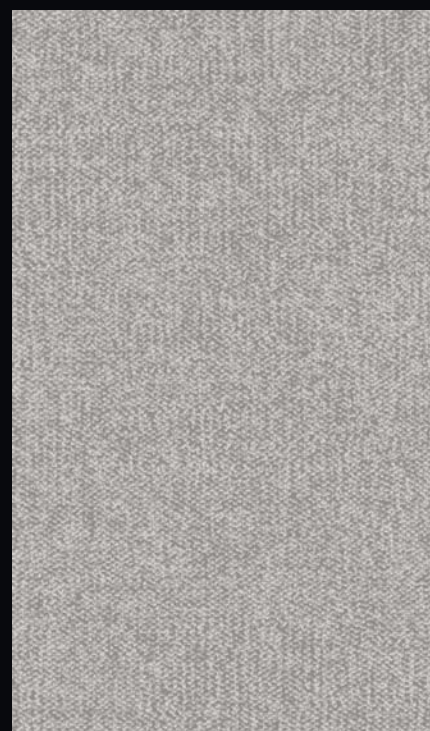
TWEED – SOOTHSAYER
4V380510



ORIGAMI – BEWITCHED
4S380530



MAZE – HOCUS POCUS
4S380560



TWEED – SLIGHT OF HAND
4V380500



ACADIAN OAK – WELL VERSED

TRANSLATIONS – MAZE
TRANSLATIONS – ORIGAMI
TRANSLATIONS – TWEED

TIMBERLINE

2.0mm x 1.83m x 25m



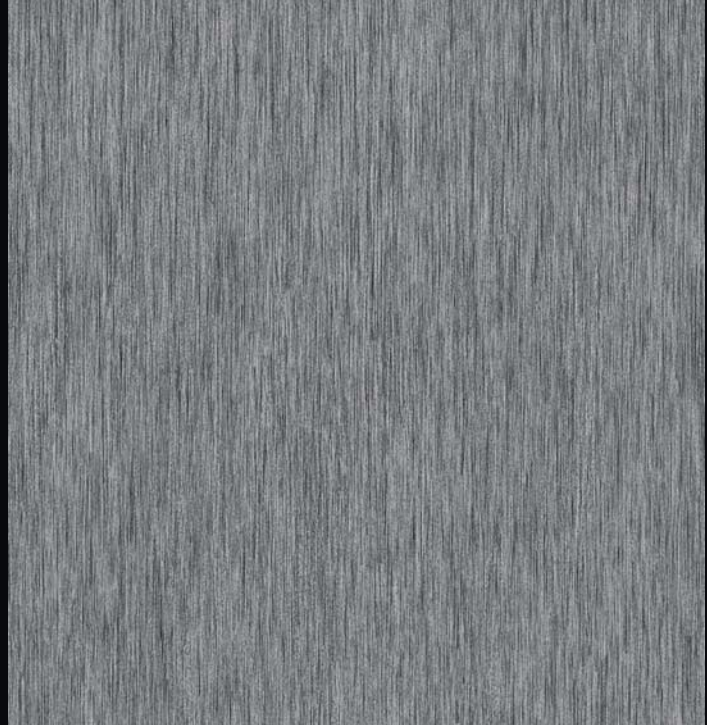
LINEARIS – RIGHT-ON
4X373430



LINEARIS – ELEMENTARY
4X373420

TRANSLATIONS

2.0mm x 1.83m x 25m



ALCHEMY – OBSIDIAN
4S380640



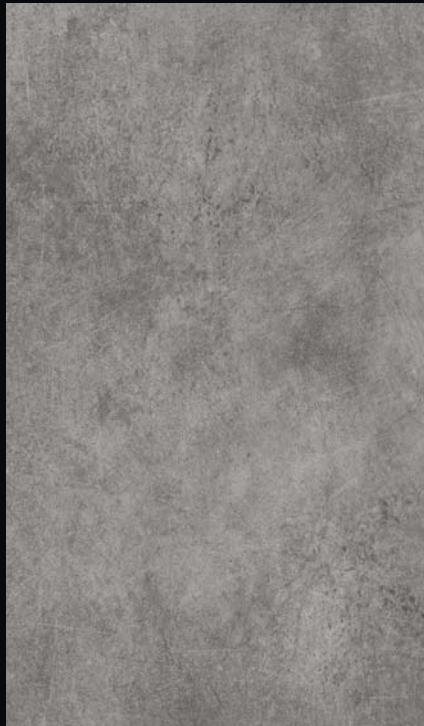
ALCHEMY – GINGER
4S380630

TRANSLATIONS

2.0mm x 1.83m x 25m



LITHOS STONE – PHYLLITE
4S343350



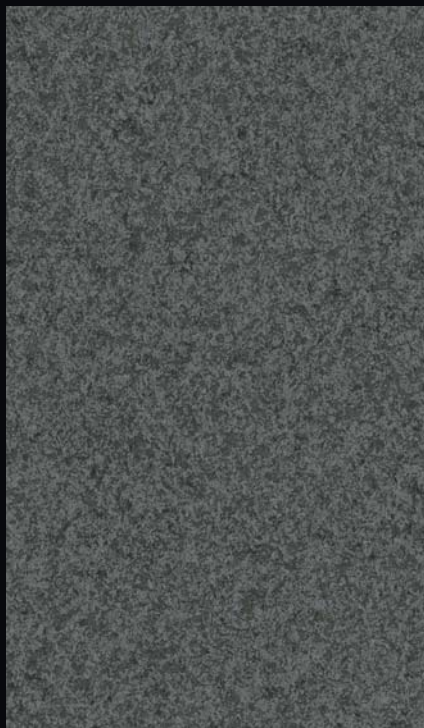
LITHOS STONE – STONE ANDESITE
4S343300



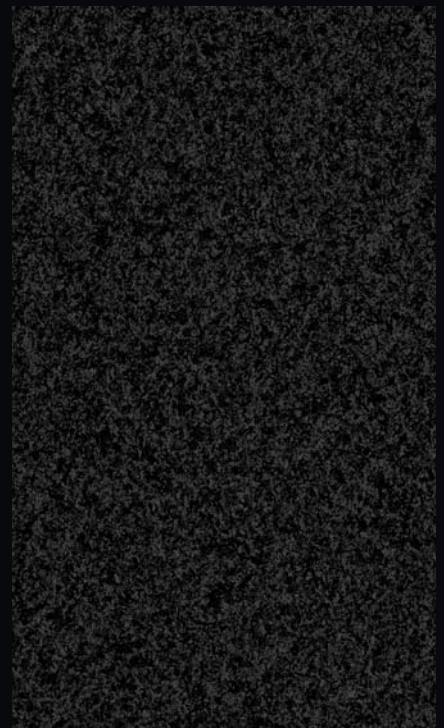
LITHOS STONE – ANTHRACITE
4S343370



SIDECAR – BAGEL
4S343520



SIDECAR – METER MAID
4S343510



SIDECAR – LAST CALL
4S343490







TIMBERLINE – BLANC

TIMBERLINE / TRANSLATIONS

HETEROGENOUS VINYL SHEET



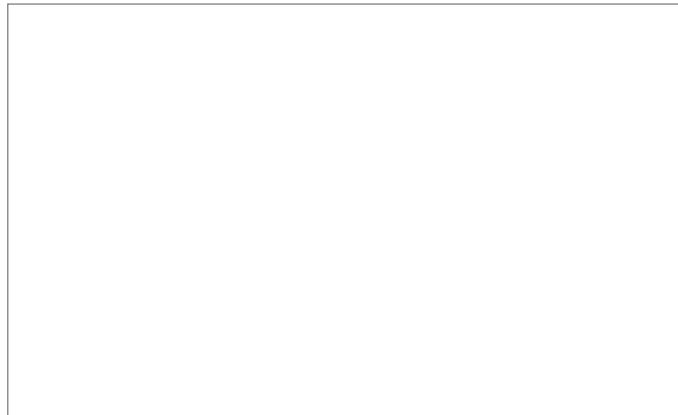
TECHNICAL DATA

Type of floor covering	Heterogeneous Sheet Vinyl					
Manufacturing standard	EN 649 (EN/ISO 10582)					
Classification	EN 685	Commercial: 33 			Industrial 42 	
Surface treatment	PUR					
Wear resistance	EN 660-1	Group T				
Wear layer thickness	EN 429	0.55mm				
Total thickness	EN 428 (ISO 24346)	2.00mm				
Roll length	EN 426 (ISO 2431)	25m				
Roll width	EN 426 (ISO 2431)	1.83m				
Weight/m ²	EN 430 (ISO 23997)	2.8 kg/m ²				
m ² /Roll	45.75m ²					
Residual indentation	EN 433 (ISO 24343-1)	≤ 0.1mm (PASS)				
Effect of castor chair	EN 425 (ISO 4918)	PASS				
Colour fastness	ISO 105-B02 (method 3)	>6 (PASS)				
Impact sound isolation	ISO 140-8	4 dB				
Flexibility	EN 435 (Method A) (ISO 24344)	20mm mandrel, no cracking (PASS)				
Chemical resistance	Good resistance (full tests can be supplied on request)					
Dimensional stability	EN 434 (ISO 23999)	<0.40% (PASS)				
Curling after exposure to heat	EN 434 (ISO 23999)	<8 mm (PASS)				
Seam strength	EN 684 (ISO 16906)	PASS				
Electrical resistance	EN 1081	2 x 10 ¹⁰ ohm (not 'anti static')				
Static electrical propensity – Walking test	EN1815	>2kV (not 'anti static')				
Fire resistance	ISO 9239-1					
Critical radiant flux	≥8 kW/m ²					
Smoke development rate	< 750% min					
Pattern	Tweed, Origami, *Maze	Lithos Stone, Sidecar	Rustic Beech	Acadian Oak, Linearis, Mahogany	Oak	Surit, Solu, Obra, Luci, Calde, Blanc
Plank size (within pattern) – nominal	N/A	N/A	Random lengths between 795-329mm x 65mm	1269mm x 180mm	Oak 1264mm x 90mm	Surit 625 x 128.5, Obra 1250 x 90, Luci 625 x 100, Solu, Calde, Blanc 625 x 112.5
Pattern repeat (mm)	900 x 1250 *(½ Dropped)	900 x 1250 (½ Dropped)	900 x 1250 (½ Dropped)	1800 x 1250	900 x 1250 (½ Dropped)	900 x 1250
Slip resistance AS/NZS 4586						
Surface embossing	EC-1	EC-2	EC-3	EC-4/EC-6	EC-4	EC-5
Appendix A: Wet pendulum	P2	P2	P2	P2	P2	P2
Appendix D: Oil-wet	R10	R10	R10	R10	R10	R10
Range	34 Patterns – 18 x wood, 3 x stone, 3 x overall, 6 x carpets, 4 x linear.					
Installation	Full Spread adhesive					
Seaming	Heat welded with matching weld rod, chemical seam seal (follow manufacturer's instructions)					
Recommended adhesive	Armstrong Flooring; Full spread SV-200, Coving & Accessories: SC-100 Contact Adhesive or PU100 Seambond at seams					
Applications	Interior commercial areas with high traffic and light industrial areas, e.g. Medical centres, nursing homes, offices, store rooms, production halls, department stores, schools, hospitals. Also suitable for residential applications.					
Manufactured	Korea					
Instructions	Armstrong Flooring Pty Ltd instructions regarding adhesives, installation, cleaning and maintenance should be observed. Please contact Armstrong Flooring for details; armstrongflooring.com.au or 1800 632 624					

NOTE: Surface Embossing – each different surface emboss/texture is tested separately for slip resistance characteristics, refer to third party certificates for details.

Please note: Recommendations are for guidance only, refer to relevant local, state, and federal construction codes and standards for requirements. Variations may occur between photographic images, samples and batches in terms of colour, shade, pattern or similar.

Contact:



Armstrong Flooring Pty Ltd 29 – 39 Mills Road,
Braeside, 3195 Victoria Australia

For further information and samples:
Australia Freecall 1800 632 624

Email customer_services@armstrongflooring.com or contact us on the web

www.armstrongflooring.com.au