

# Green Square 4M



## TECHNICAL SPECIFICATIONS

Country of Origin:	New Zealand
Colours:	10 Standard
Yarn:	100% Wool
Surface Texture:	Level Loop Pile
Gauge:	15.7/10cm (1/4th Gauge)
Thickness:	6.50mm
Pile Weight:	1360g/m <sup>2</sup>
Backing:	Jute
Availability Options:	
Installation Method:	Conventionally Laid
Installation Options:	Straight
Type:	Broadloom Carpet
Roll Size:	4.00
Pattern Repeat:	Not Applicable

## PERFORMANCE

Flammability:	CRF 2.2kW/m <sup>2</sup> (Conventional Installation)~
Stain Resistance:	Natural Wool Fibre Stain Resistance
ACCS Rating:	Residential Extra Heavy Duty & Stairs, Contract Medium Duty & Stairs (#20173)
Australian Guarantee:	5 Year Contract Guarantee Available on Request*
Smoke Value:	750% minutes (Conventional Installation)

## SUSTAINABILITY

Accreditation:	Manufactured under a quality and environmental system certified and complying with ISO 9001 and ISO 14001 by an accredited certification body.
PVC Minimisation:	PVC Free



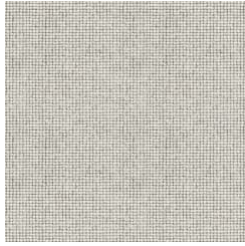
Specifications and colourations are subject to manufacturing tolerances. As part of the GH Commercial continuous improvement program, GH Commercial reserves the right to change the specifications of or delete colours of this product without notice. While all care is taken, product images may vary in colour due to possible printing process variations. Images do not seek to duplicate the exact visual appearance, but serve merely as a guide or point of reference.

All GH Commercial carpets must be installed in accordance with the latest AS2455 and any relevant GH Commercial Installation Instructions. ~Test results and certificates are available on request.

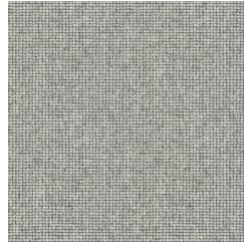
# Green Square 4M



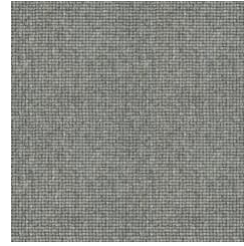
0536  
SANDY SHORE



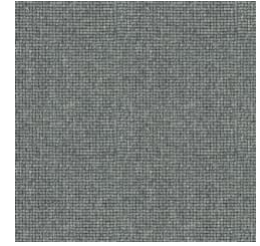
0735  
CLAY STONE



0740  
WINTER SOLSTICE



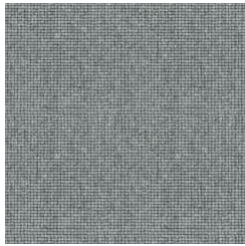
0765  
FLINT



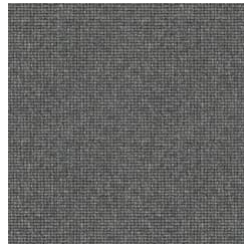
0750  
ASHEN



0550  
SOURDOUGH



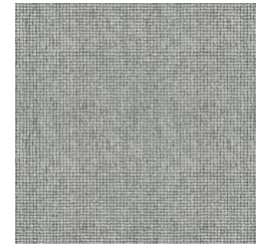
0745  
EVENING DUSK



0770  
COAL FACE



0710  
GREY CLOUD



0725  
LIGHT METAL